



MILES ESTATE AGENTS

55 Burge Crescent Cotford St. Luke  
Taunton TA4 1NU £295,000





A spacious 3 storey Town House with 3 double bedrooms and first floor sitting room in this ever popular modern village 5 miles North West of Taunton close to the lovely Quantock Hills and within Kingsmead catchment area. Good size kitchen/breakfast room, separate dining room, enclosed garden, garage and parking - early viewing recommended. Freehold Council Tax Band D EPC : C.







## Features:

- Entrance hall
- Separate dining room
- Good size kitchen / breakfast room
- Utility & cloakroom
- First floor sitting room
- Master bedroom with en suite
- 2 further double bedrooms
- Family bathroom
- Enclosed garden
- Single garage & off road parking
- Freehold
- Council Tax Band D
- EPC : C





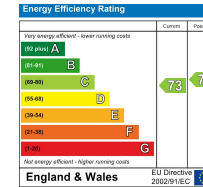
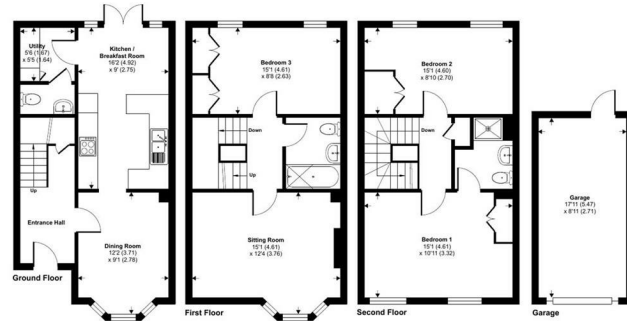
# Burge Crescent, Cotford St. Luke, Taunton, TA4

Approximate Area = 1205 sq ft / 111.9 sq m

Garage = 160 sq ft / 14.8 sq m

Total = 1365 sq ft / 126.7 sq m

For identification only - Not to scale



Floor plan produced in accordance with RICS Property Measurement 2nd Edition, incorporating International Property Measurement Standards (IPMS: Residential). © nrichcom 2025. Produced for Miles Alexander Limited T/A Miles Estate Agents. REF: 1315737



Viewings strictly through the selling agents:

**Miles Estate Agents**

2 Piffin Lane, Bishops Lydeard, Taunton, Somerset, TA4 3AS

**Tel: 01823 470 500**

[lydeard@milesestateagents.co.uk](mailto:lydeard@milesestateagents.co.uk)

[www.milesestateagents.co.uk](http://www.milesestateagents.co.uk)

**rightmove**

**OnTheMarket.com**

**MILES ESTATE AGENTS**

**BEST**  
ESTATE AGENT GUIDE  
2019 : EXCEPTIONAL  
SALES